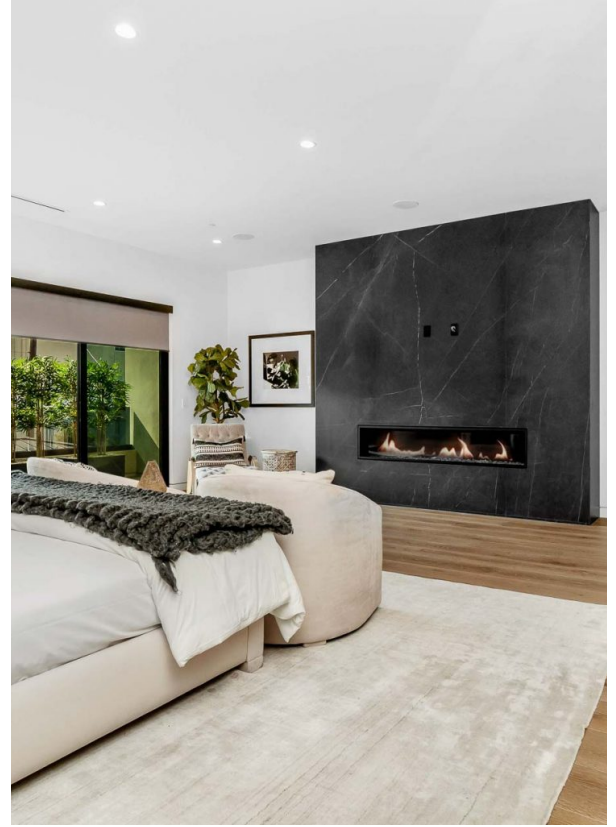
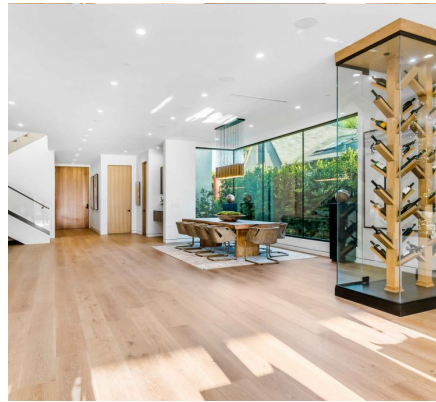
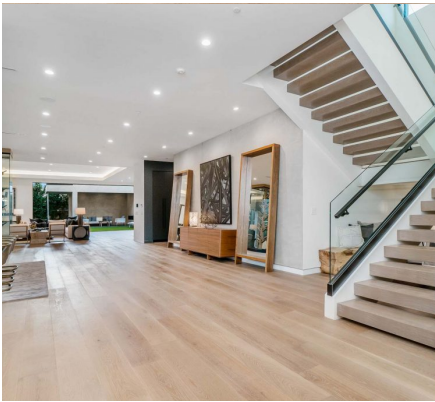




THE
LIVYATAN GROUP

PRICE AVAILABLE UPON REQUEST
5 BEDS 6 BATHS
APPROX. 6,110 SQFT 7,751 SQFT LOT



OVERVIEW

Newly Constructed, Gorgeous modern in desirable Beverly Center area. This masterpiece features architectural lines, European oak wide plank floors, high ceilings, and luxurious finishes on a beautiful, oversized lot. A wide entry hall with staircase sits next to an elegant formal dining room with floor-to-ceiling windows and Wine display. Gourmet Chef's kitchen with dual wall ovens and Center Island with range, and breakfast bar. An inviting living room boasts a modern fireplace and a wall of pocket doors, perfect for entertaining. The romantic master suite has a large fireplace, private balcony, incredible walk-in closet, and spa-like bath with soaking tub and massive glass rain shower. Spacious guest bedrooms boast private balconies and beautiful baths, offering wonderful accommodations for family and friends. Outside, the incredible entertainer's yard features a sparkling pool ...



347 NORTH ALFRED STREET
LOS ANGELES, CA 90048



ADI LIVYATAN



(818) 919-4060



ADILIVYATAN@YAHOO.COM



1892750



347ALFRED.COM