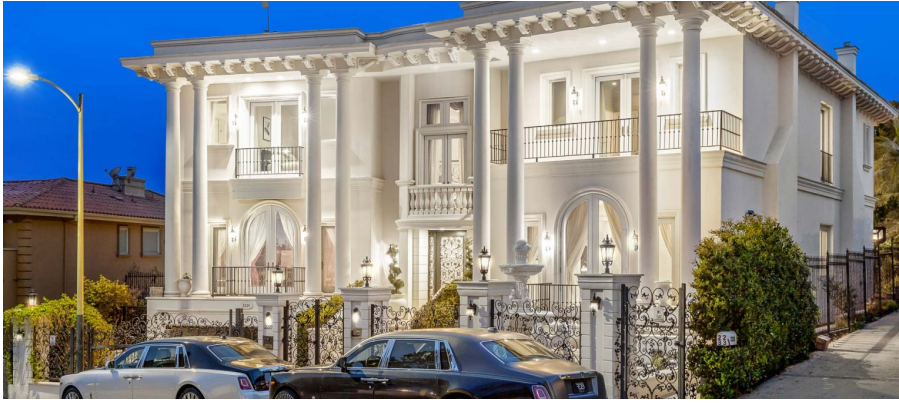




❑ \$8,499,000
❑ 6 BEDS ❑ 8 BATHS
❑ 9,757 SQFT ❑



OVERVIEW

Indulge in luxury living at 2229 Summitridge Dr, a stunning 6-bedroom, an 8-bathroom estate with 9,757 square feet of living space. As you enter the home, you'll be greeted by a grand foyer and an awe-inspiring living room with views overlooking stunning views, a family room to cozy up in front of the fireplace and enjoy a great movie, a serene sitting room to enjoy a nice book, a gorgeous dining room for entertaining large dining party while enjoying delicious food and taking in the breathtaking view of Beverly Hills. The grand state-of-the-art chef's kitchen features top-of-line appliances and is fully equipped to serve large parties or intimate family gatherings. Ascend to the second level, where you'll find the primary bedroom. This tranquil haven boasts two balconies, a sitting/relaxing area, and a stunning, luxurious ensuite with a large shower and jetted tub ...



2229 SUMMITRIDGE DRIVE
BEVERLY HILLS, CA 90210



PETER JUMRUKOVSKI



(310) 218-3820



PETER@THESUAREZTEAM.COM



02079846



2229SUMMITRIDGE.COM